

The Pennsylvania Asthma Partnership is a collaboration between the American Lung Association in Pennsylvania and the Pennsylvania Department of Health. This collaboration is funded by the Pennsylvania Department of Health through a cooperative agreement with the Centers for Disease Control and Prevention.

Quick Links

[Join PAP](#)

[About PAP](#)

[Resources](#)

[Asthma 101](#)

[Coaches Clipboard](#)

[Open Airways For Schools](#)

[Asthma Management Plan](#)

[Contact Us](#)

In This Issue

[Asthma 101](#)

[Study Sheds Light on Child Asthma Rates](#)

[GHHI Releases RFP for Support for Comprehensive Asthma Care Management Programs](#)

[Extraordinary Give](#)

Asthma 101



ASTHMA
101 



What You Need to Know
RESOURCE BOOK

1-800-LUNGUSA | Lung.org

Are you interested in learning about effective management of asthma in the classroom?

By viewing and listening to Asthma 101, you can receive 2 hours of ACT 48 or ACT 58 credits. You are required to sign in with your name, email and PPID. Your PPID is the 7 digit number issued to you by The Department of Education.



Let's Stay Connected!

PA Asthma Partnership



Clean Indoor Air for PA



Healthy Air PA



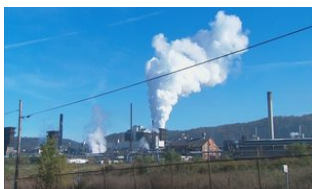
ALA in PA



PA Department of Health



Study Sheds Light on Child Asthma Rates



A new study has revealed some alarming statistics about the number of local children diagnosed with asthma.

Aiden's asthma can be set off by something as simple as a walk with his mother. He was diagnosed with asthma at 13 months old, and

needs at least six doses of medication each day. When his mother was pregnant with him, they lived a few blocks away from a steel mill. It's the same home they live in today.

Now, a landmark study by Allegheny Health Network is making that connection. Researchers studied more than 1,200 local school children living near sources of industrial pollution. The study found 39 percent of the children were exposed to unhealthy levels of outdoor pollution. Of the children, 22 percent were diagnosed with asthma and of those, 60 percent have asthma that's uncontrolled.

Dr. Deborah Gentile, an asthma and immunology physician, said the study found the number of local children with asthma more than doubled both the state and national averages.

Our Sponsors



GHHI Releases RFP for Support for Comprehensive Asthma Care Management Programs



Green & Healthy Homes Initiative (GHHI) is conducting a nationwide, open competition for organizations interested in pro bono technical assistance to build capacity of local community-based partners to develop or enhance a comprehensive asthma care management program. GHHI will select up to five projects to participate as a cohort of subrecipients. Over the course of eight months, members of the cohort will receive proven technical assistance focused on

stakeholder engagement, program design, capacity building, and data sharing.

National Launch Webinar

GHHI will host a National Launch Webinar on November 16th from 3-4 pm EST to provide information about the entire EPA grant as well as specific information about the Business Development RFP. Please join us by [registering here](#).

Extraordinary Give

**THE EXTRA
ORDINARY
GIVE**



For the past five years, in just 120 hours of giving, the Extraordinary Give has raised \$22.5 million for more than 500 nonprofit organizations!

This year on Friday, November 17, please support the American Lung Association through this amazing opportunity and in honor of Lung Cancer Awareness Month.

Your generous gift will be stretched by at least a HALF MILLION DOLLARS from the Lancaster County Community Foundation and Extraordinary Give sponsors.

Click below to visit the American Lung Association's webpage on the Extraordinary Give website and make your online donation on November 17!

We thank you for your continued participation in the Pennsylvania Asthma Partnership and dedication to supporting Pennsylvanians with asthma across the Commonwealth.

Sincerely,

John Keith

